



Chris Mefford

# Kirkland Business Roundtable

April 11, 2018

**cai** community  
attributes inc

## Content

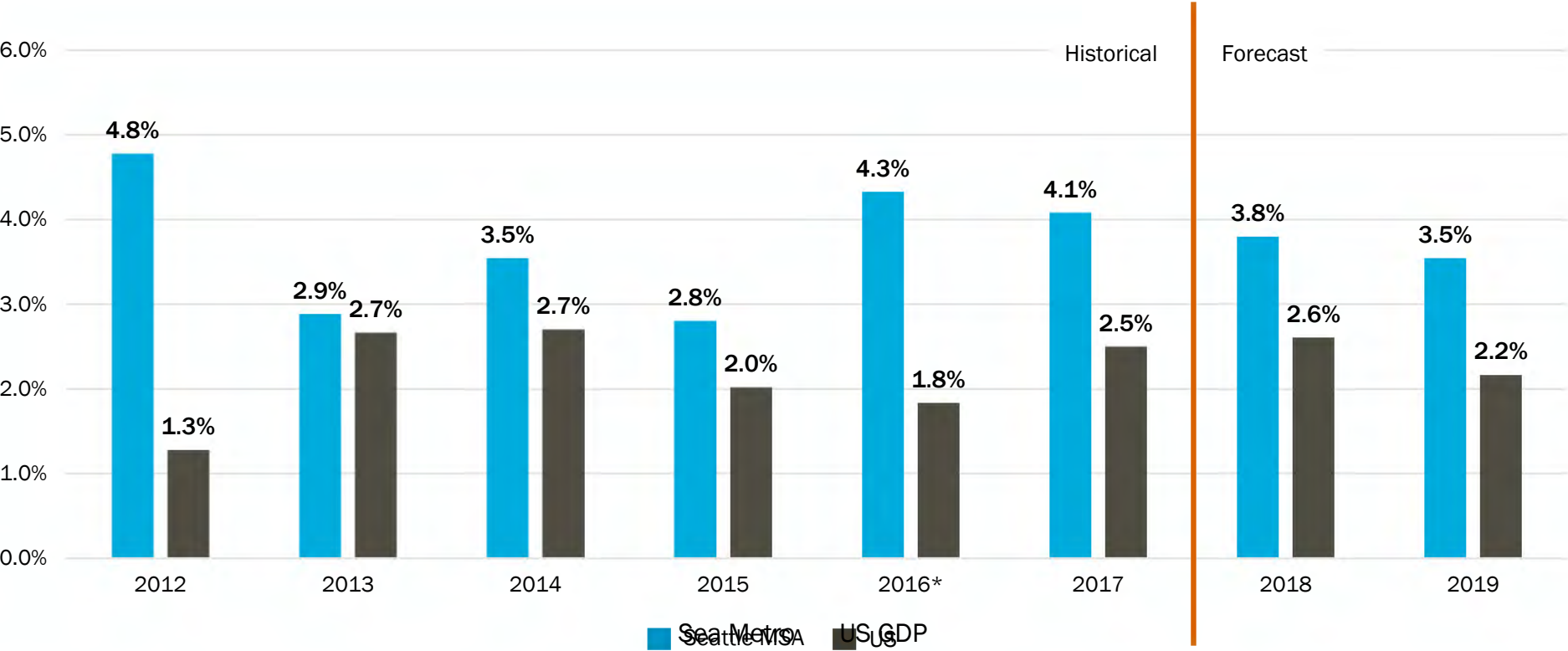
- Productivity & Revenues
- Exports
- Jobs
- Creative Economy
- Population

## What does growth look like in the next few years?

- Jobs in demand and why
- Regional strengths, challenges, and opportunities

# Productivity & Revenues

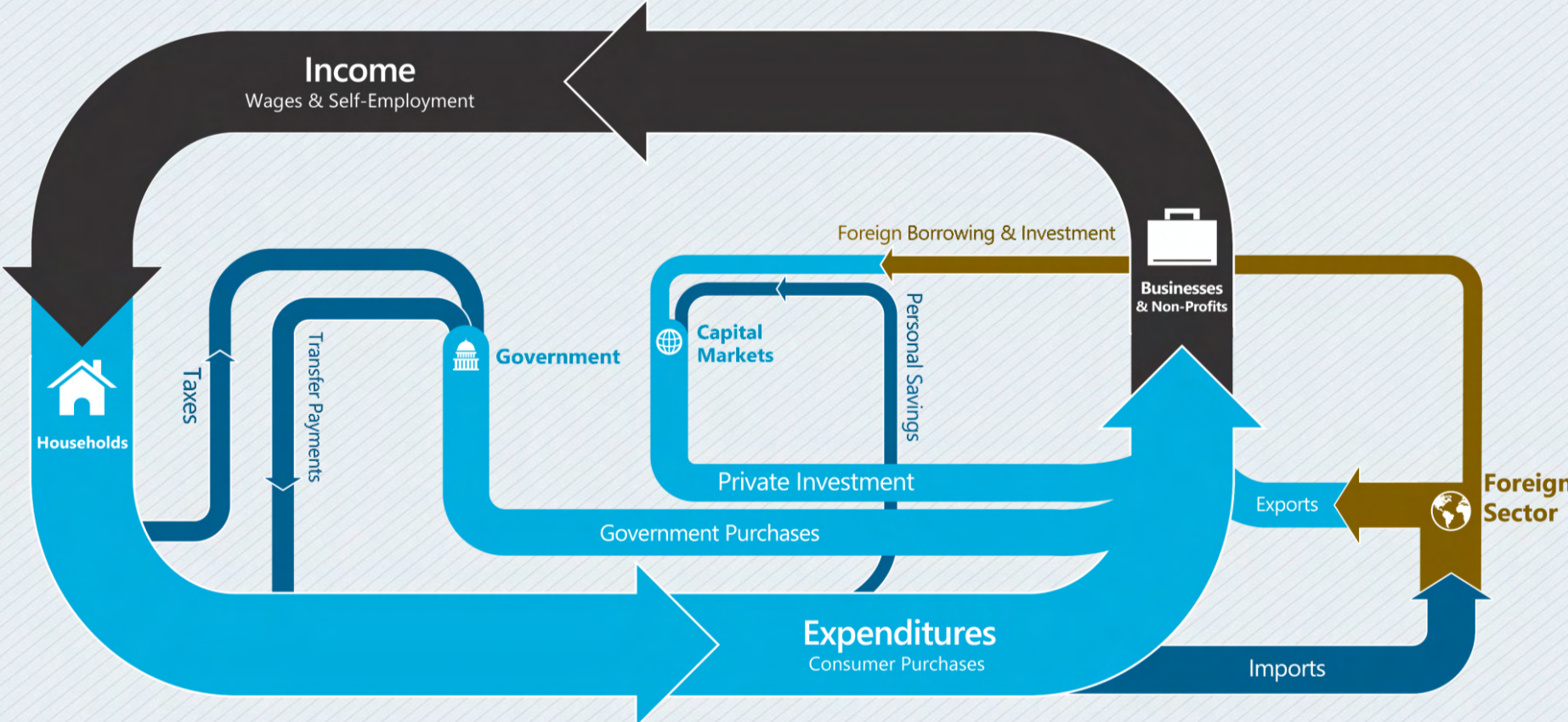
# Productivity: Gross Domestic Product



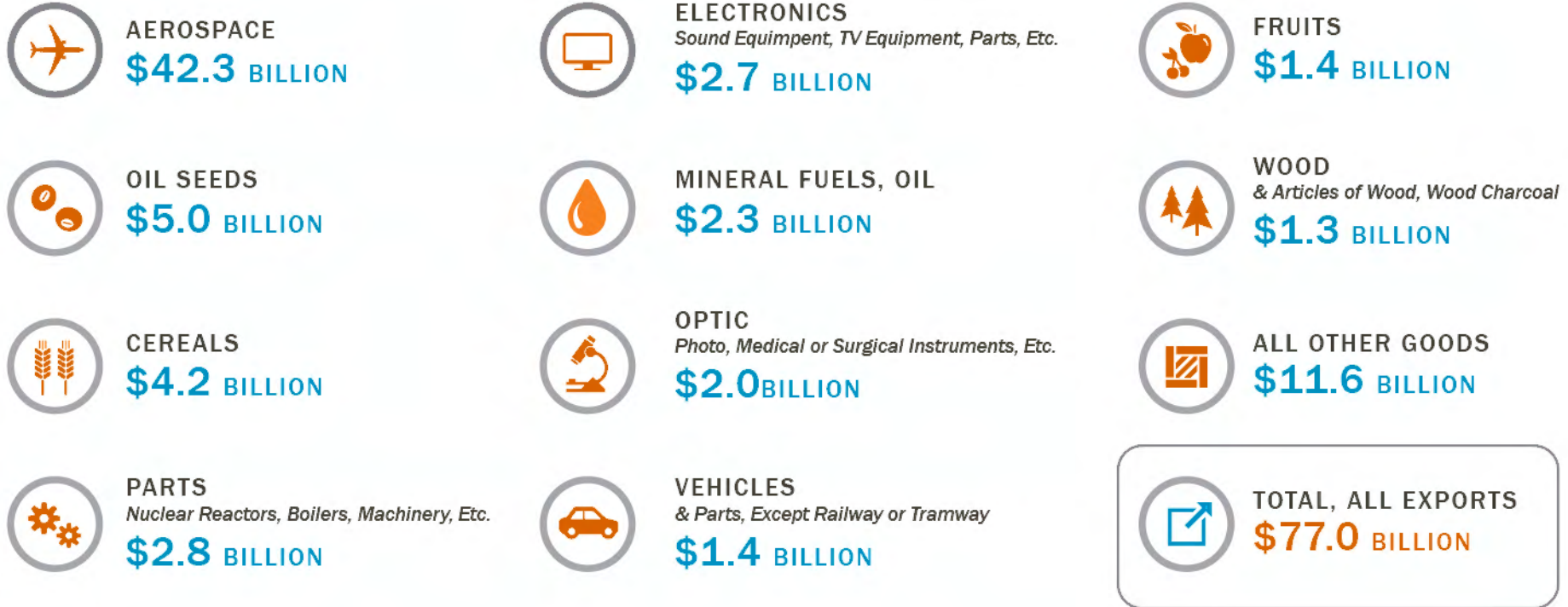
Sources: U.S. Bureau of Economic Analysis, 2018.

# Exports

# Circular Flows of the Economy

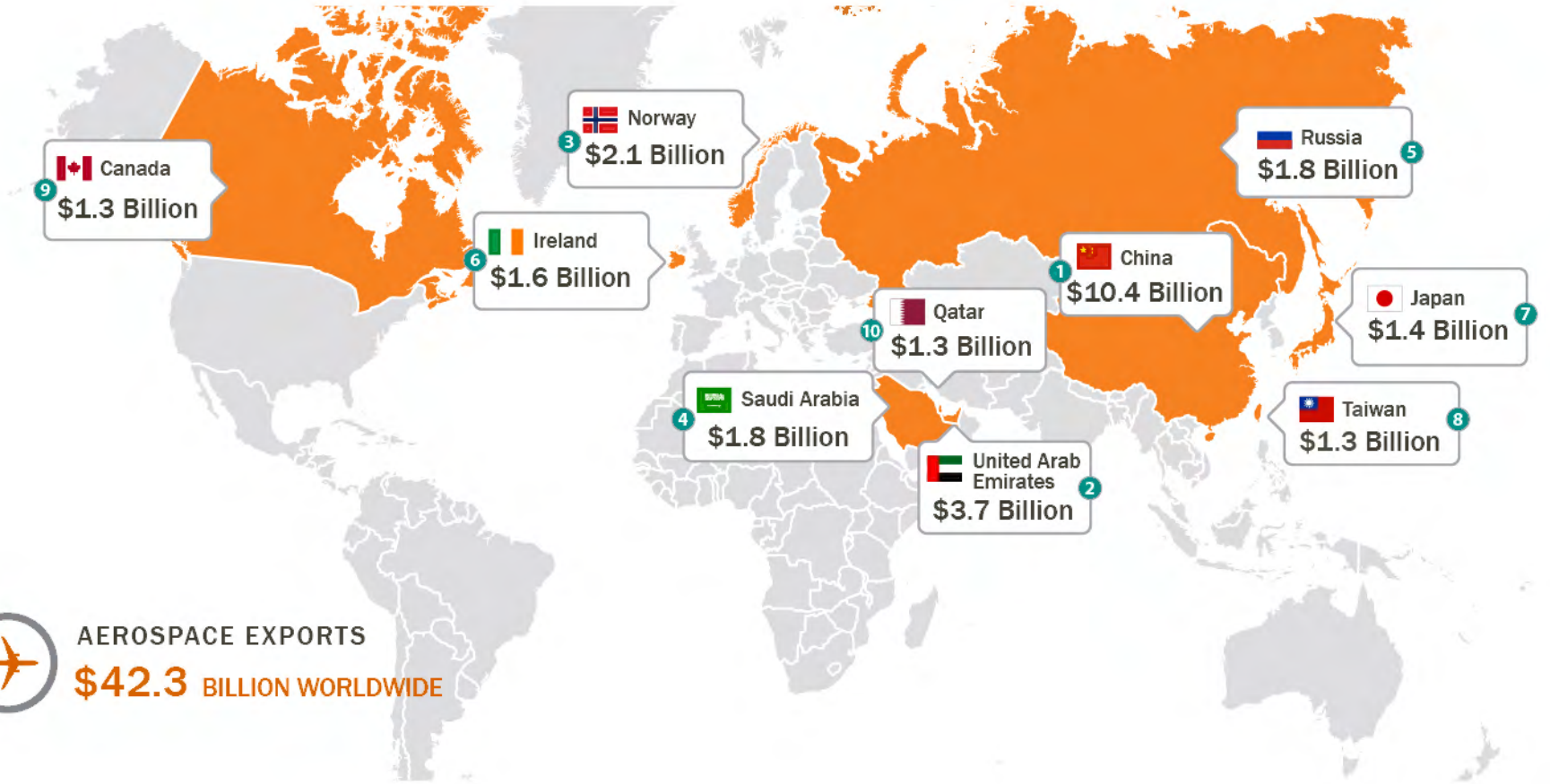


# Total Washington Exports by Commodity or Merchandise



# Washington Aerospace Exports

2017



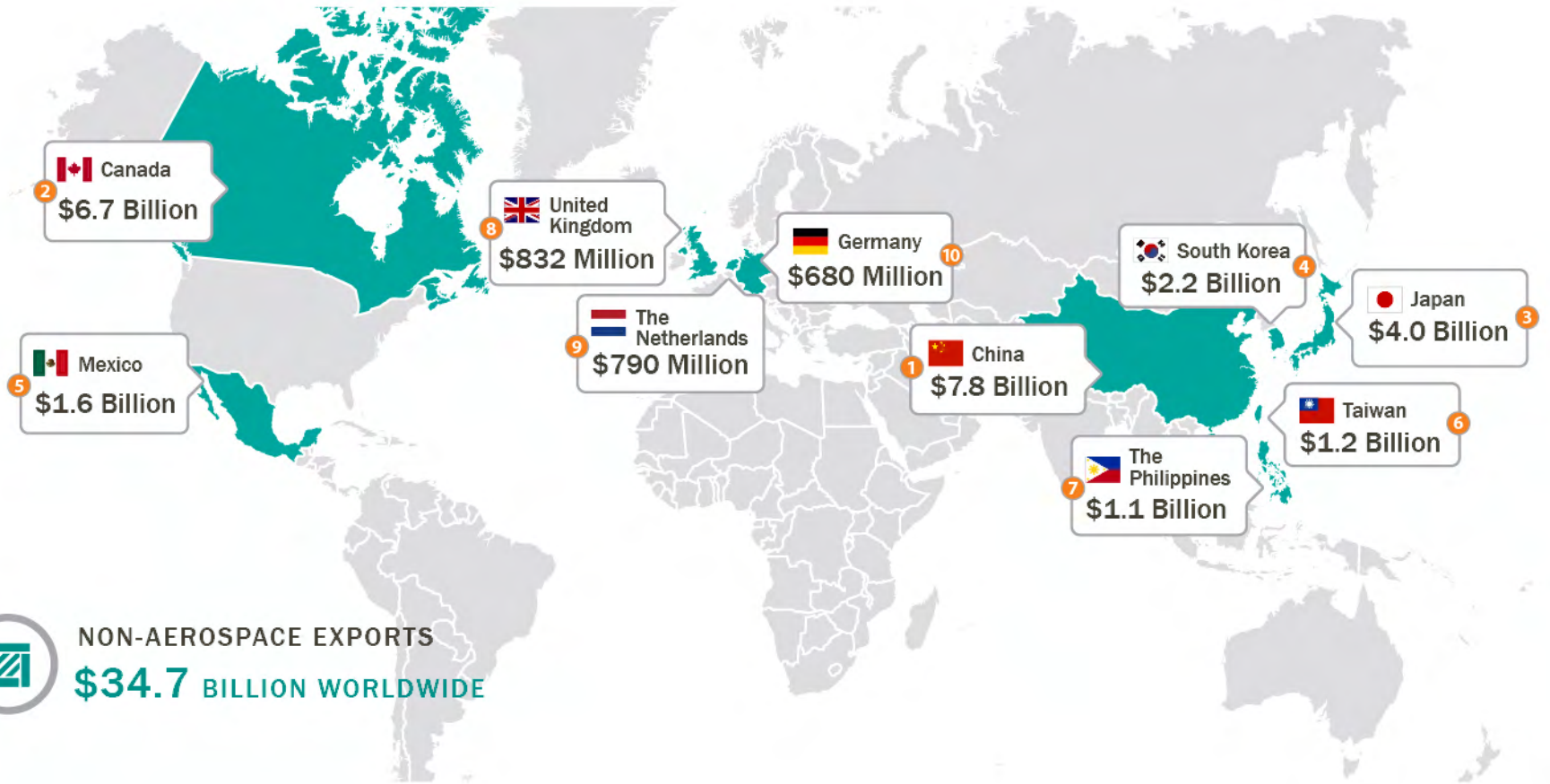
AEROSPACE EXPORTS  
**\$42.3** BILLION WORLDWIDE

Source: U.S. Census Bureau, 2018.



# Washington Non-Aerospace Exports

2017



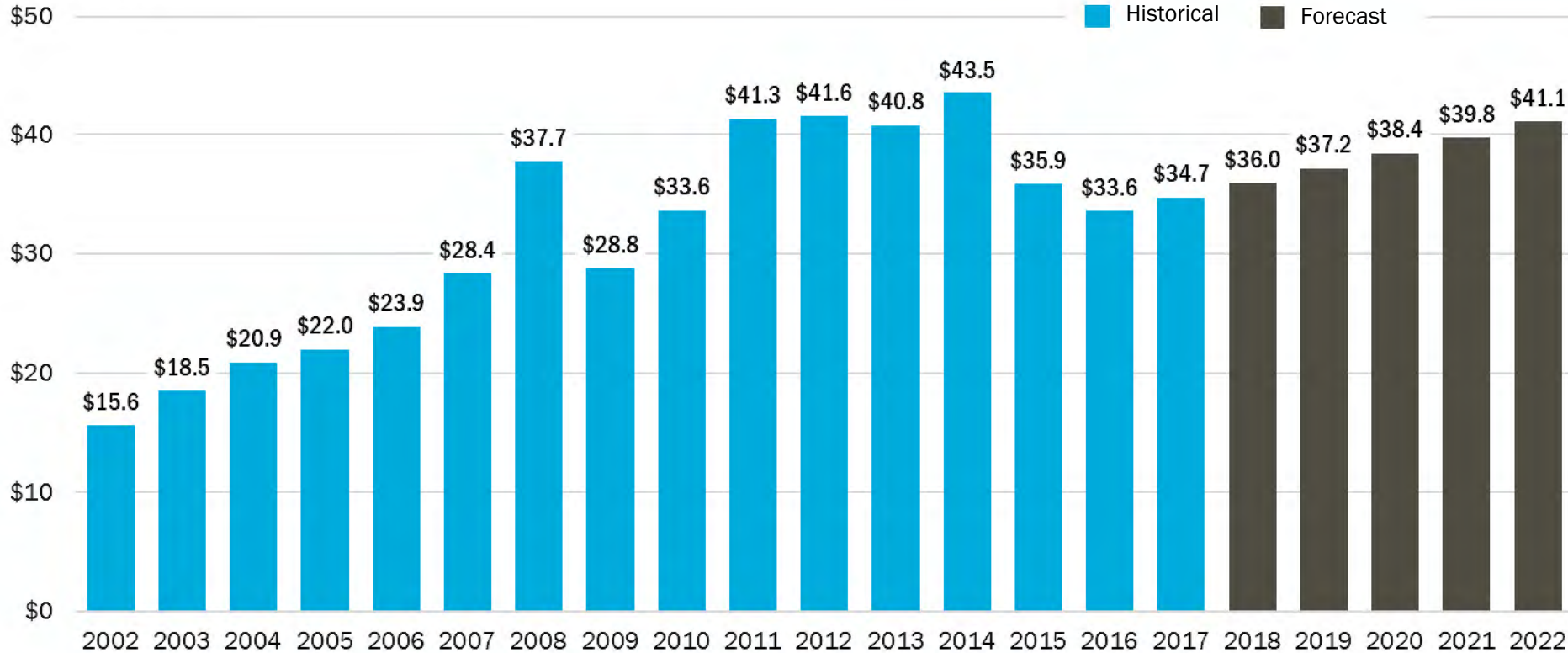
 NON-AEROSPACE EXPORTS  
**\$34.7 BILLION** WORLDWIDE

Source: U.S. Census Bureau, 2018.

# Merchandise and Commodities: Washington Exports

Non Aerospace, 2002-2022

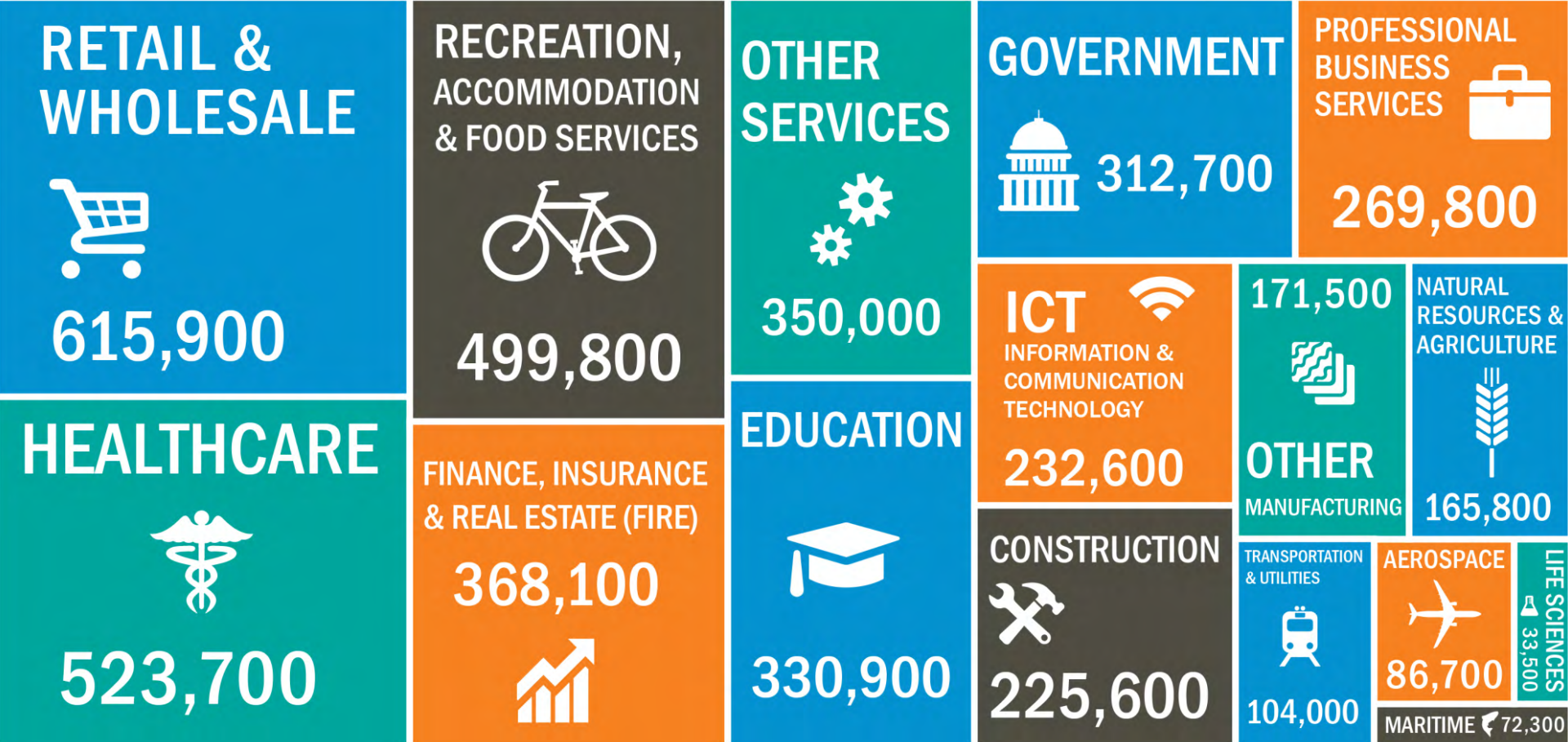
Billions, 2017 \$



Sources: U.S. Census Bureau, 2018; International Monetary Fund, 2017 and 2018; Blue Chip Economic Indicators, 2018; Community Attributes Inc., 2018

# Jobs

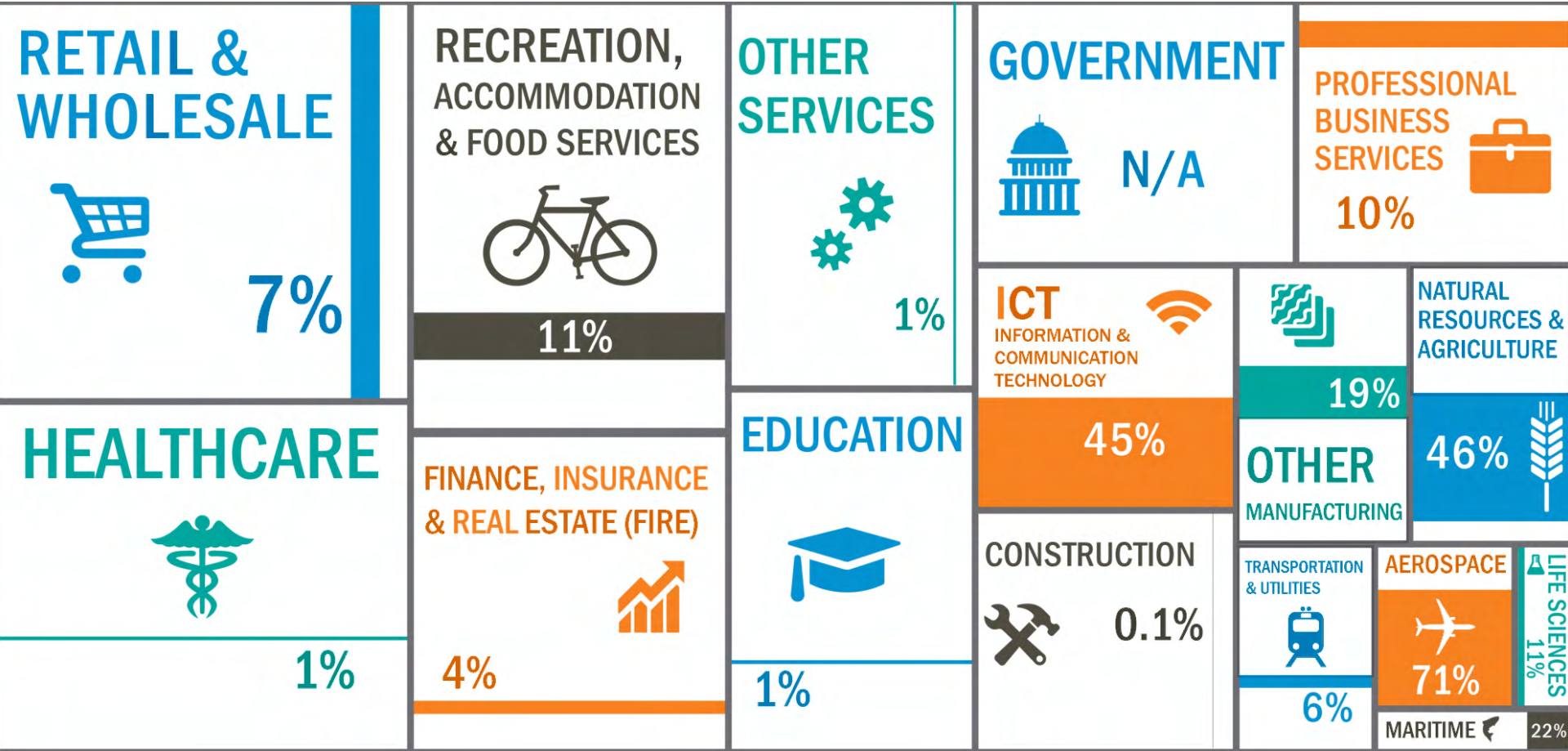
# Major Industries in Washington 4,326,400 Total Jobs



Sources: Bellevue Creative Economy Study, 2017; QCEW, 2017; Washington State Employment Security Department, 2017; QCEW, Bureau of Labor Statistics, 2017; Industry/Occupation Crosswalk, Washington State Employment Security Department, 2017; Bureau of Economic Analysis, 2017

# Major Industries in Washington

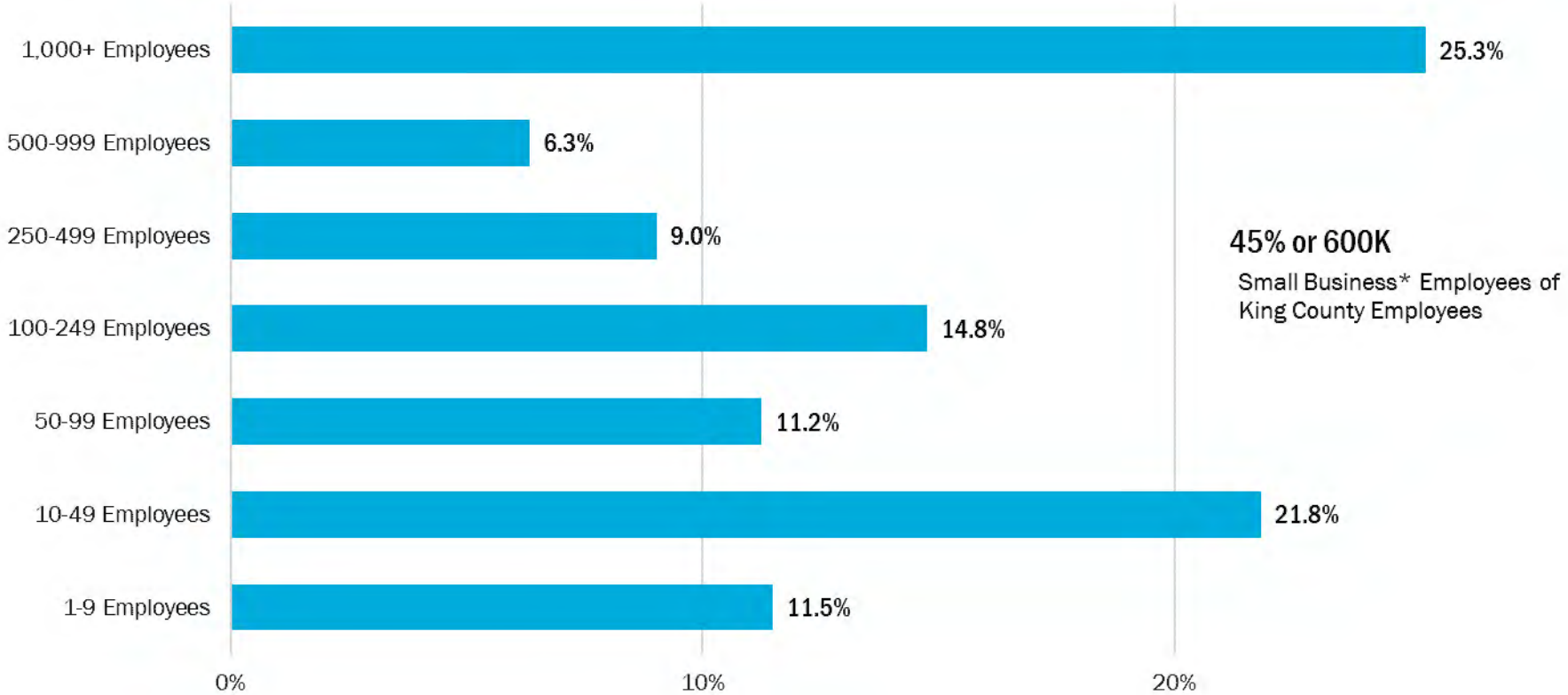
Percent of Export Jobs by Industry



Sources: Bellevue Creative Economy Study, 2017; QCEW, 2017; Washington State Employment Security Department, 2017; QCEW, Bureau of Labor Statistics, 2017; Industry/Occupation Crosswalk, Washington State Employment Security Department, 2017; Bureau of Economic Analysis, 2017

# King County Employment by Establishment Size

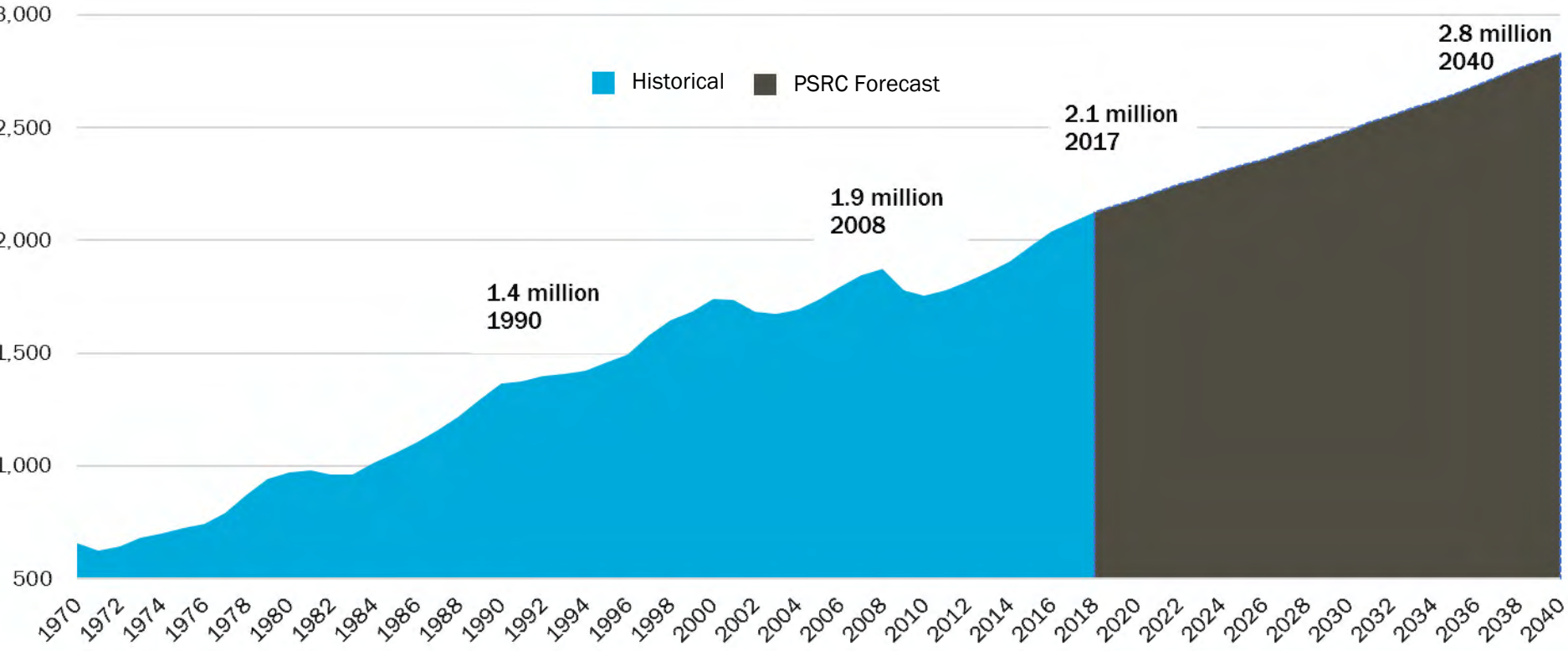
2017



Sources: QCEW, Washington State Employment Security Department, 2018.  
Note: Small Businesses are defined as firms employing fewer than 100 employees.

# Jobs (Central Puget Sound Region)

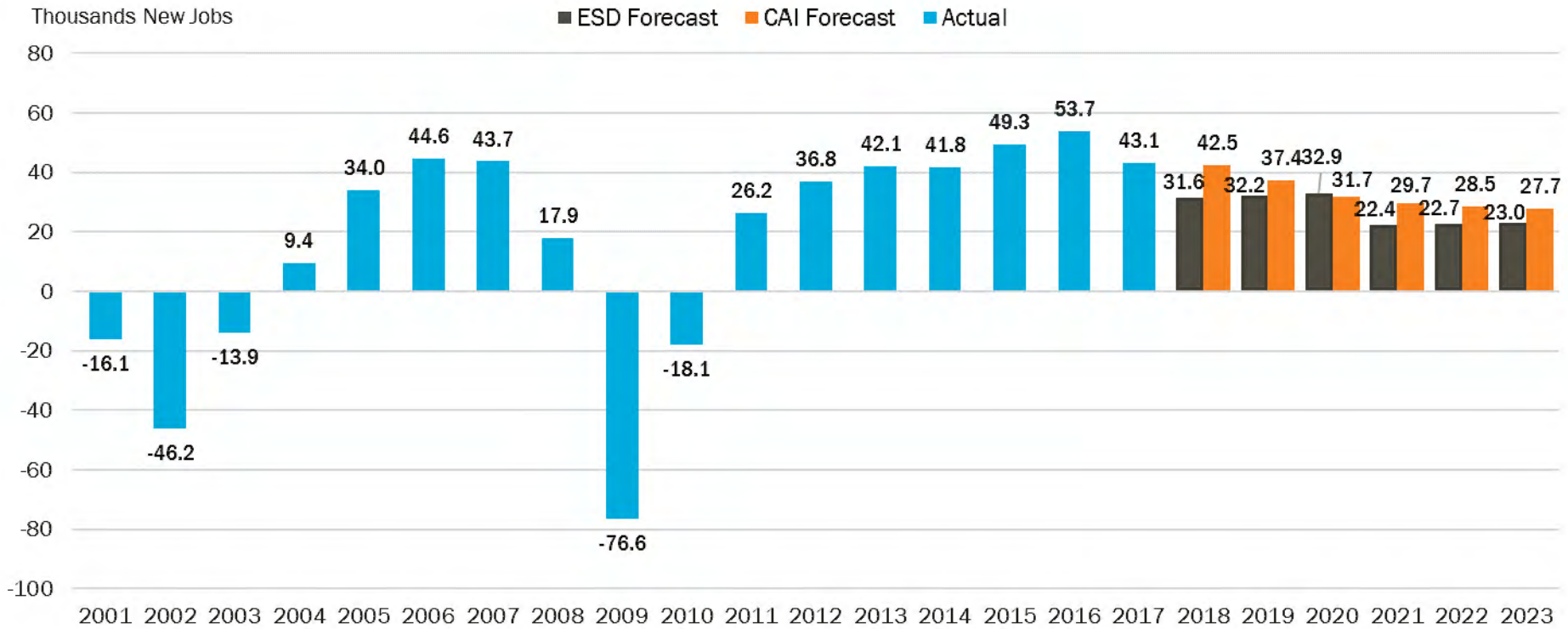
1970-2040



Sources: Regional Macroeconomic Forecast, Puget Sound Regional Council, 1970-2040

# Jobs (Seattle-Bellevue-Everett)

2001-2023

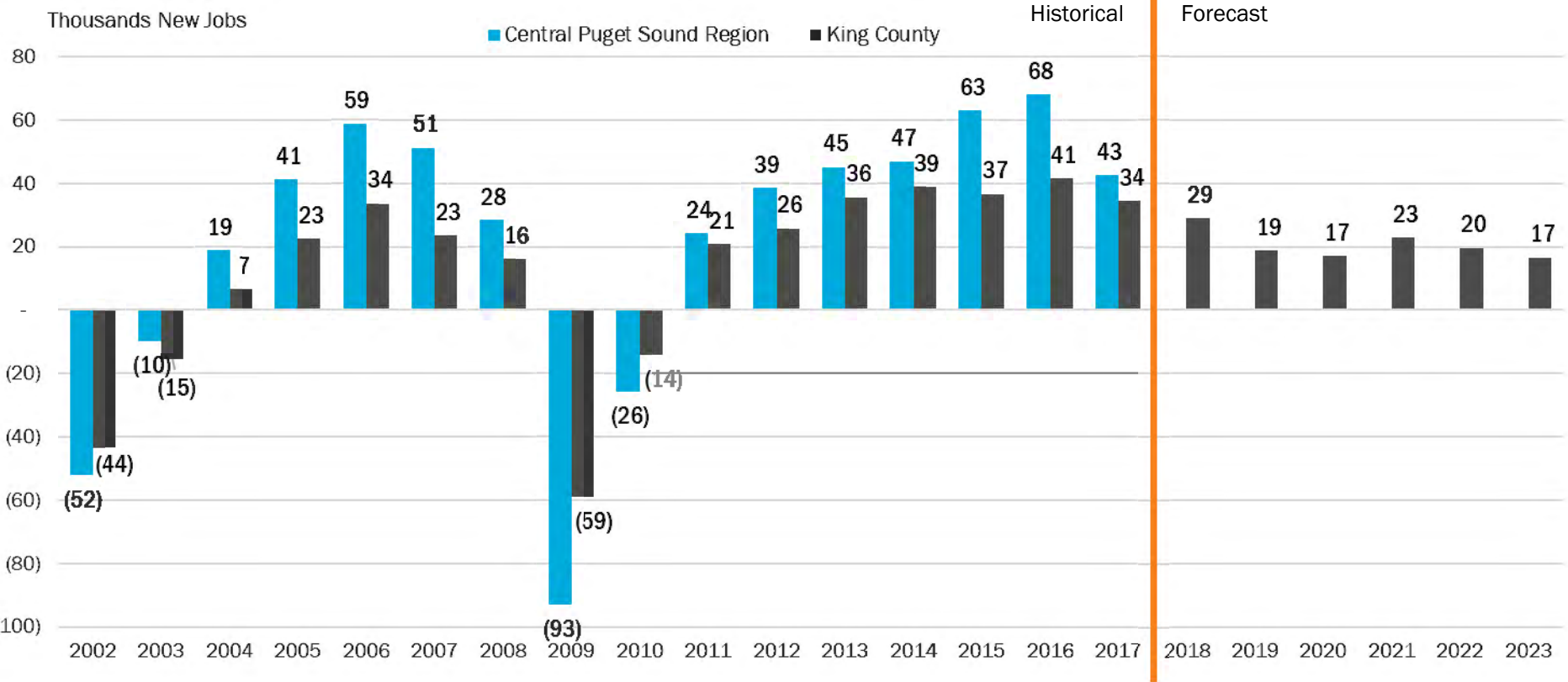


Sources: Bureau of Labor Statistics; Regional Macroeconomic Forecast, Puget Sound Regional Council; Washington State Employment Security Department, 2001-2023 16



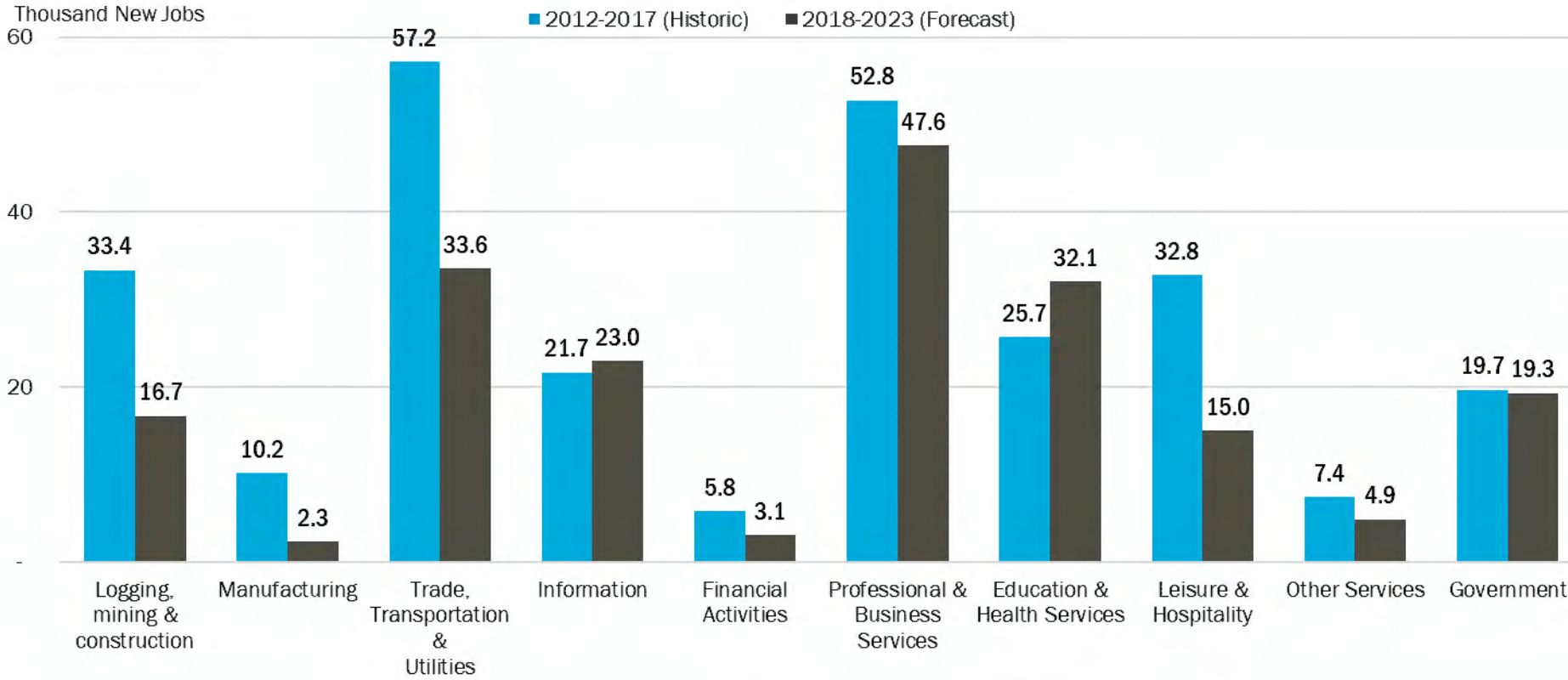
# Job Growth (King County)

2002-2023



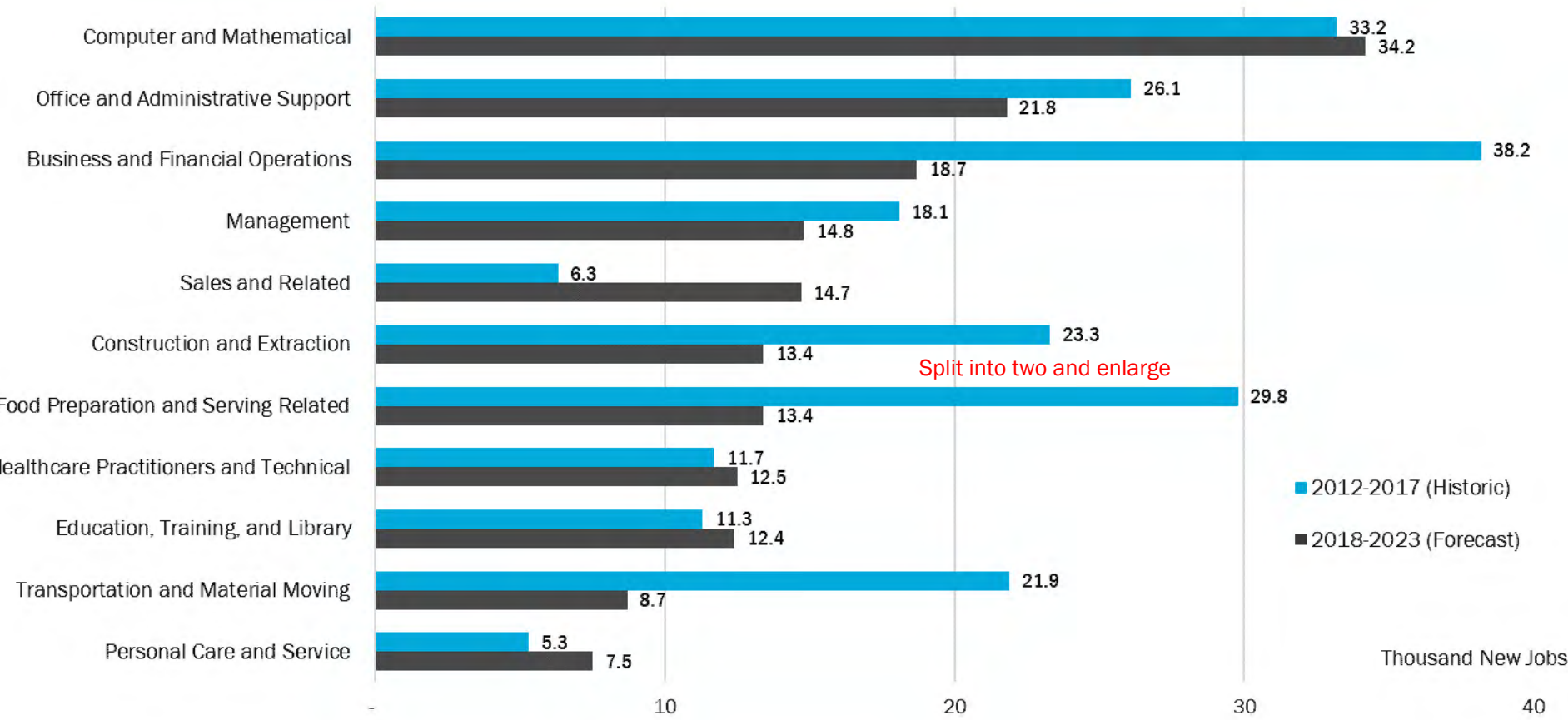
Sources: Regional Macroeconomic Forecast, Puget Sound Regional Council, 2002-2023

# Jobs by Industry (Seattle-Bellevue-Everett)



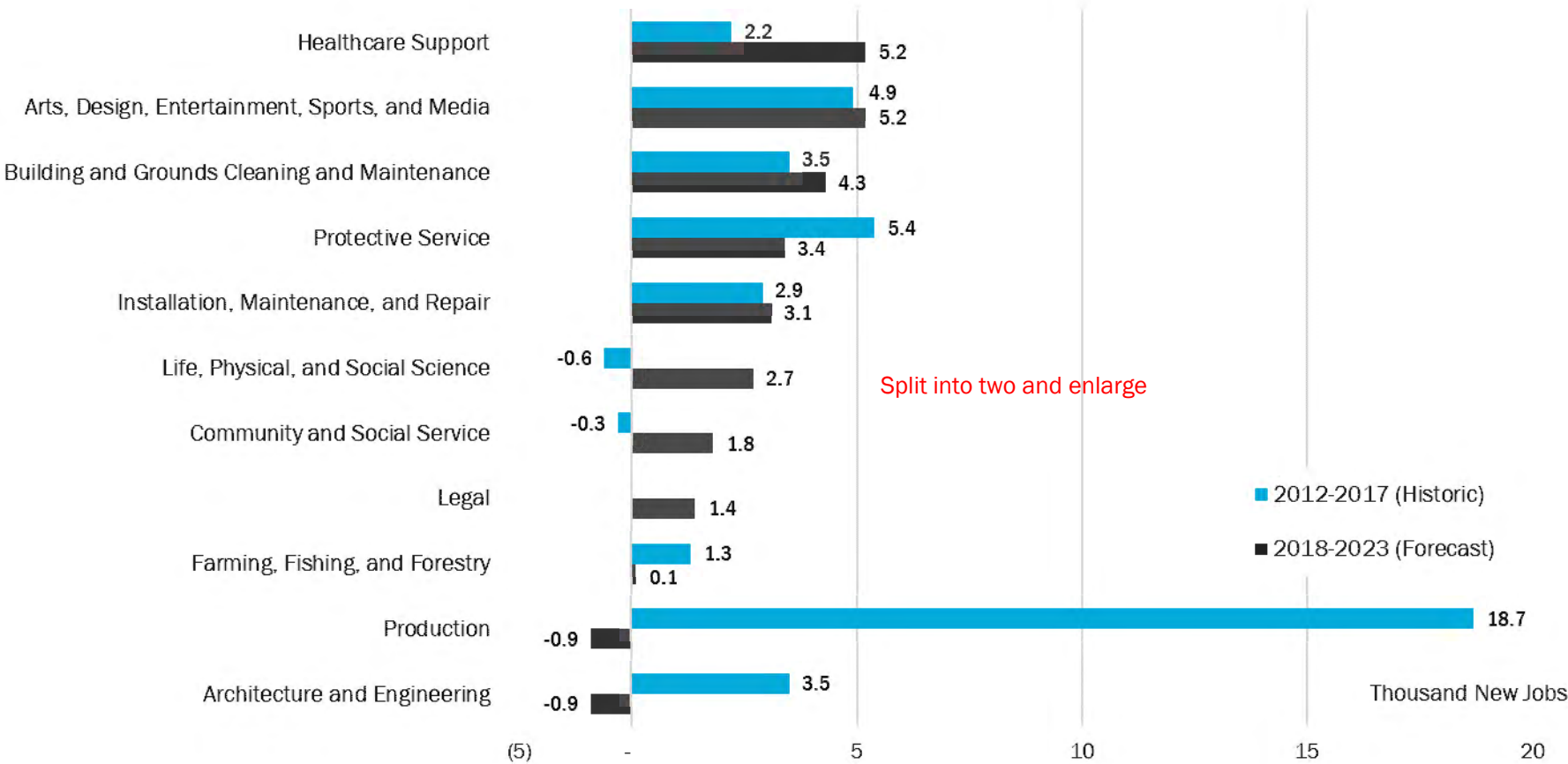
Sources: Bureau of Labor Statistics; Washington State Employment Security Department, 2001-2023

# Jobs by Occupations (Seattle-Bellevue-Everett)



Sources: Washington State Employment Security Department; Bureau of Labor Statistics; 2012-2023

# Jobs by Occupations (Seattle-Bellevue-Everett)



Sources: Washington State Employment Security Department; Bureau of Labor Statistics; 2012-2023

# Creative Economy

# Creative Economy of King County

**ICT**   
 INFORMATION &  
 COMMUNICATION  
 TECHNOLOGY

**76,200**

**PROFESSIONAL  
 BUSINESS  
 SERVICES**   
**15,300**

**RECREATION,  
 ACCOMMODATION  
 & FOOD SERVICES**  
  
**7,100**

**OTHER  
 SERVICES**  
  
**6,900**

**LIFE  
 SCIENCES**   
**4,500**

**EDUCATION**  
  
**2,300**

**RETAIL &  
 WHOLESALE**  
  
**1,900**

**GOVERNMENT**  
  
**2,800**

**FIRE**  
  
**1,500**

**OTHER  
 MFG**   
**800**

**120,400 Total Creative Economy Jobs**

 **400 AEROSPACE**  
 **400 HEALTHCARE**  
 **300 CONSTRUCTION**

Sources: Bellevue Creative Economy Study, 2017; QCEW, 2017; Washington State Employment Security Department, 2017; QCEW, Bureau of Labor Statistics, 2017; Industry/Occupation Crosswalk, Washington State Employment Security Department, 2017; Bureau of Economic Analysis, 2017

# Creative Economy Industries and Jobs, King County



## Creative Industries

- Advertising
- Architectural and related
- Culture and heritage, including libraries
- Design
- Film, video and sound
- Independent artists
- Internet broadcasting and publishing
- Music production, distribution and sales
- Performing arts and entertainment
- Printing and publishing
- Television and radio



## Creative Jobs

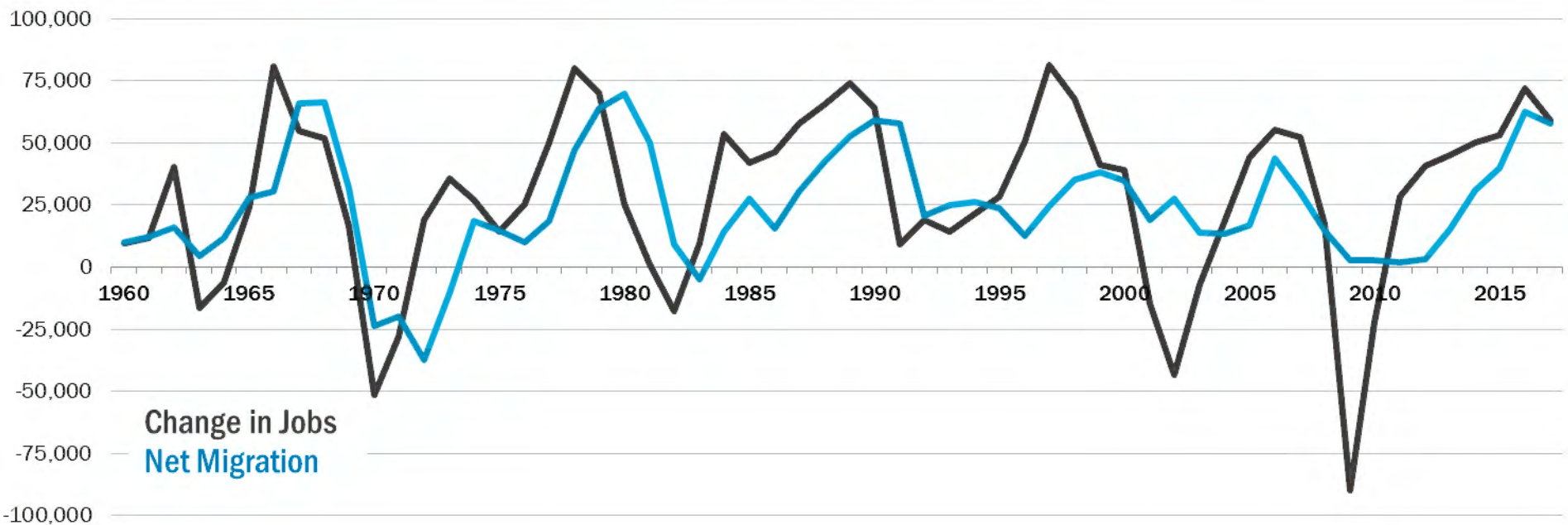
- Actors
- Architects (including landscape)
- Art directors
- Choreographers
- Commercial and industrial designers
- Craft artists
- Fashion designers
- Fine artists
- Graphic designers
- Interior designers
- Multi-media artists and animators
- Music directors and composers
- Producers and directors
- Set and exhibit designers
- Writers and authors

# Population & Growth

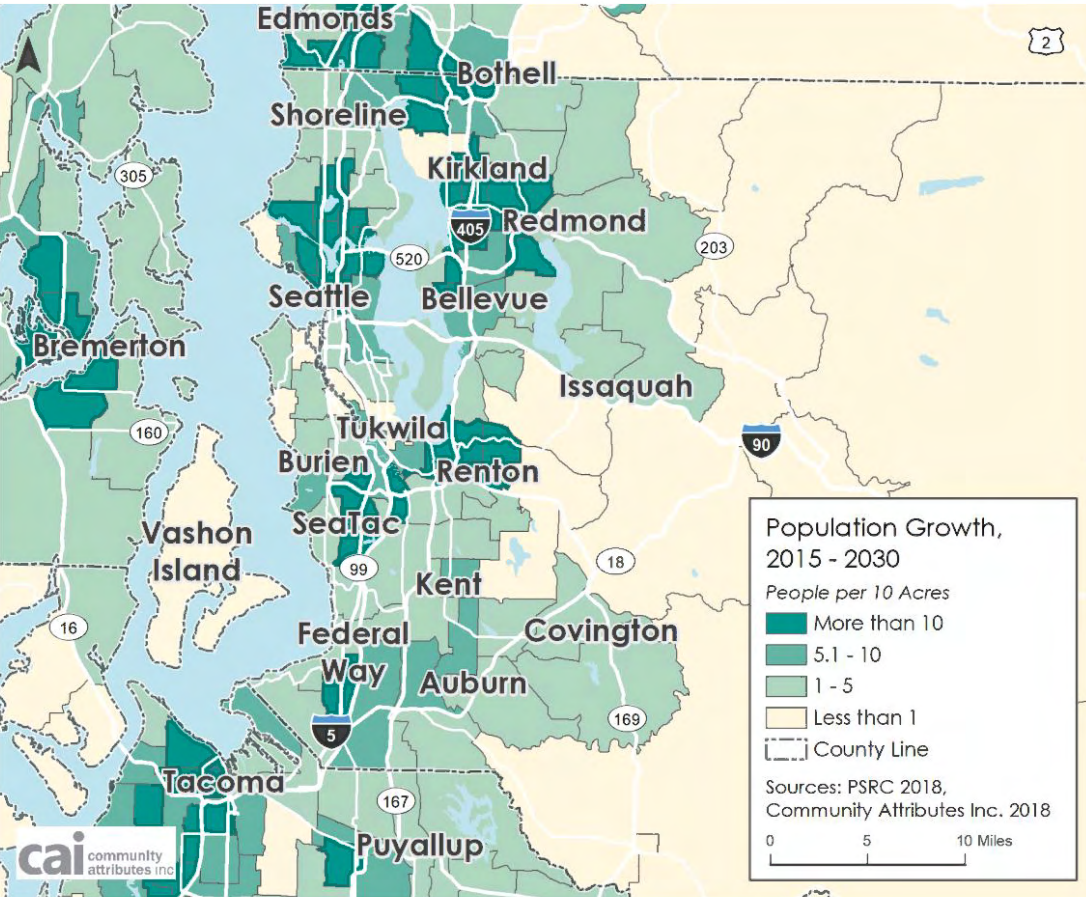


# Jobs and People

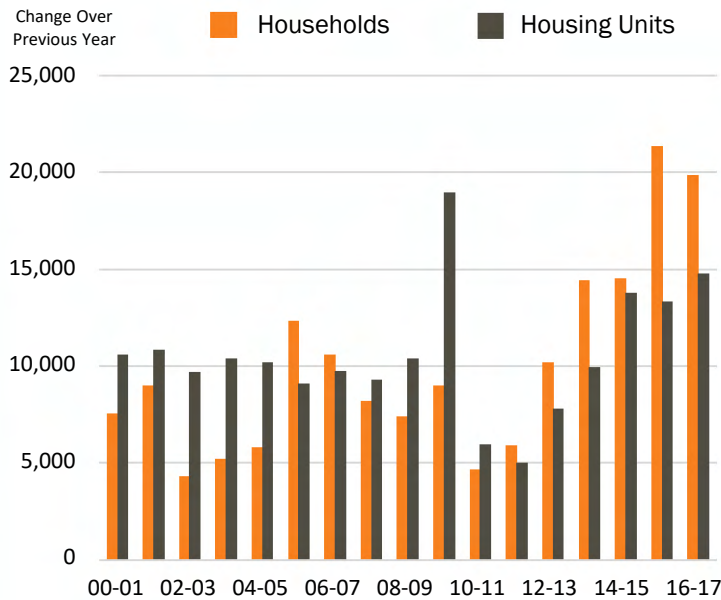
Change in Jobs & Net Migration, Central Puget Sound Region



# Population Growth & Housing Unit Change

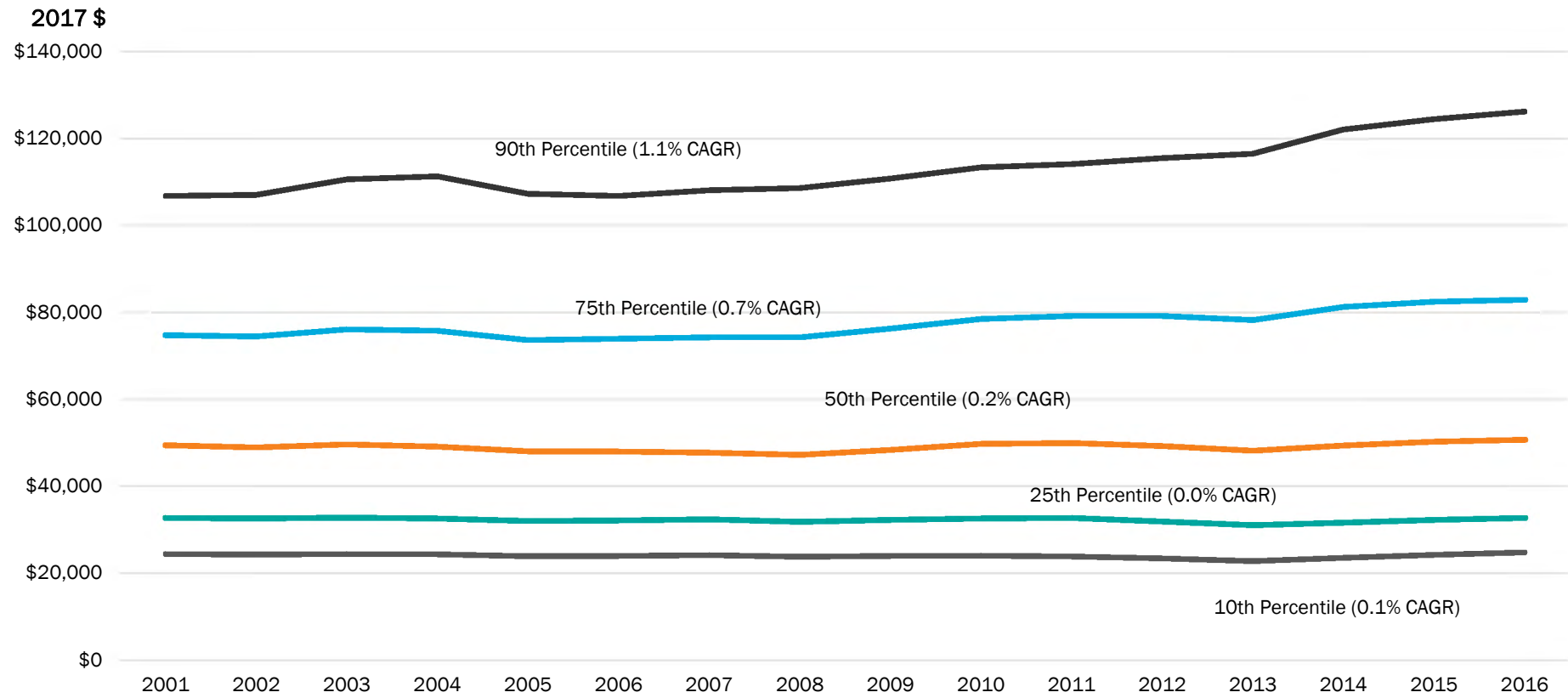


King County Annual Households & Housing Unit Change, 2000-2017



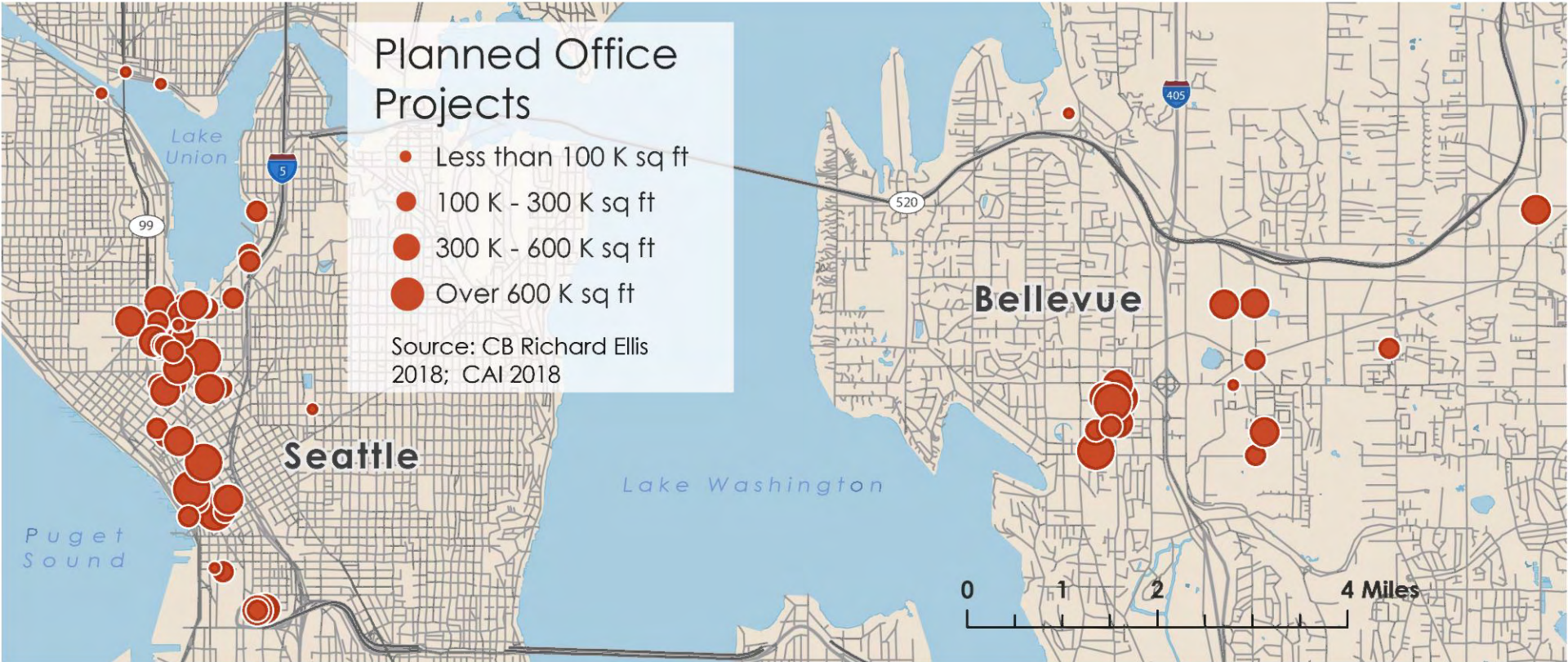
Sources: Washington State OFM, 2017

# Wages & Incomes (Seattle-Bellevue-Everett)



Sources: Bureau of Labor Statistics, OES, 2018.

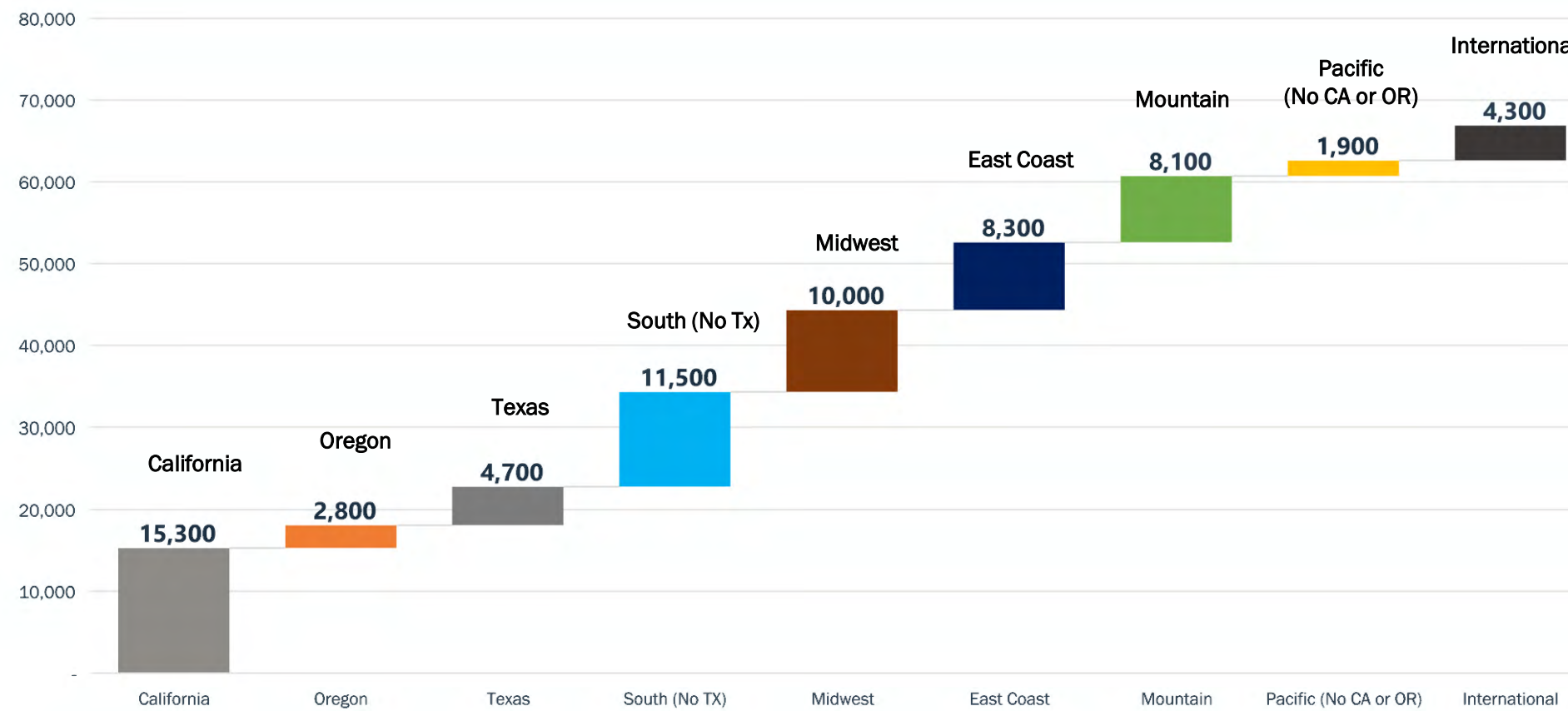
# Planned Office Projects, Seattle and Bellevue



Sources: CB Richard Ellis, 2018; Community Attributes Inc, 2018

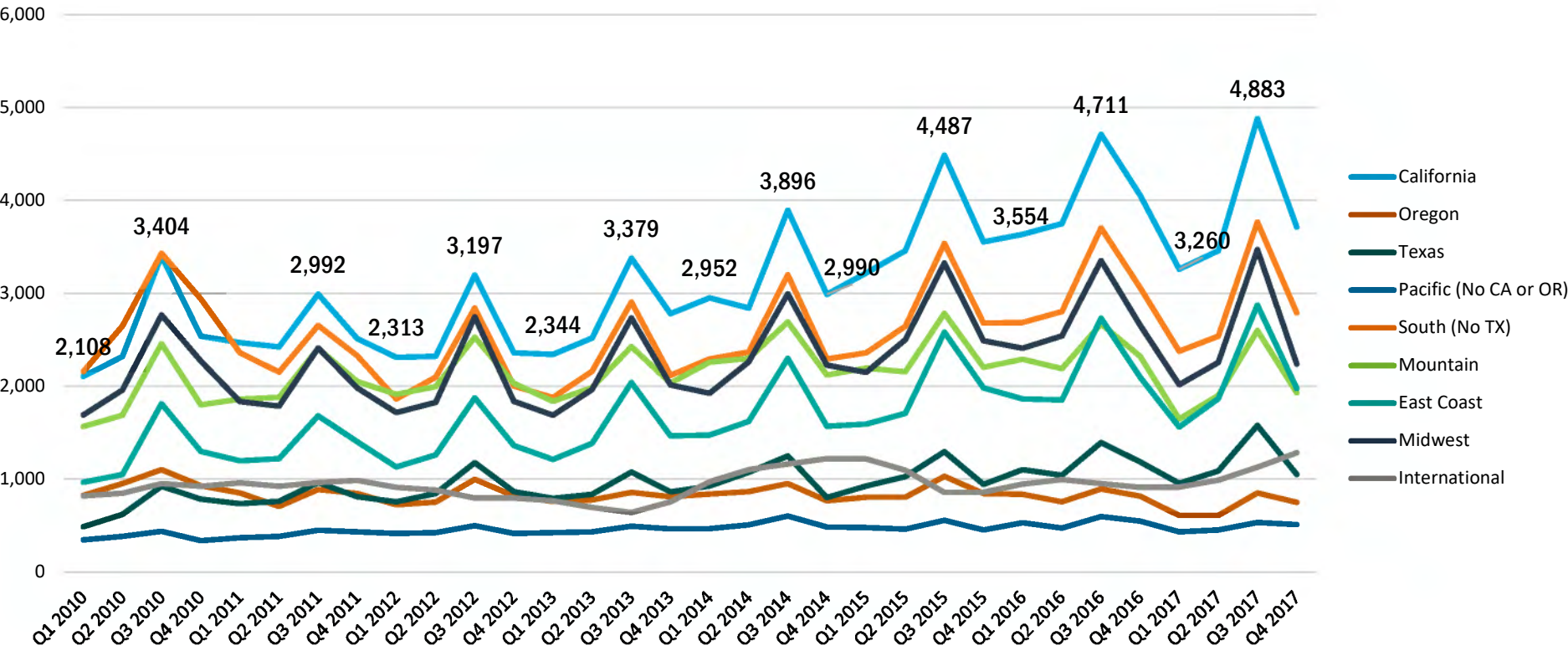
# Migrations to King County

By Origin of Newly Issued King County Driver's Licenses, 2017



Source: DOL WA 2018

# Origin of Newly Issued King County Driver's Licenses



Source: DOL WA 2018

# Regional Strengths, Challenges & Opportunities

# Economic Growth Pyramid

**TRADE SHOWS**  
**Branding,**  
**Marketing, Promotion**  
SITE SELECTION SUPPORT

Help Grow, Recruit  
Businesses

Permitting,  
Business Support    **Workforce  
Supports**

**Entrepreneurial Support**

Higher Education    BUSINESS CLIMATE

Retain & Sustain  
Businesses, Entrepreneurs

**BASIC NEEDS**    **Housing**    Public Safety

PUBLIC HEALTH    **TRANSPORTATION**

**Parks & Trails**    **VIBRANT NEIGHBORHOODS**

**Schools & Early Childhood**    CULTURAL ASSETS

Provide Livable  
Communities



# Strengths



Momentum



Global Presence



Talent Attraction



Natural Environment

# Challenges



Housing



Education



Workforce Supply



Business Climate &  
Fiscal Sustainability

# Opportunities



New Market  
Aircraft



Cloud Technology



Artificial Intelligence &  
Tech Entrepreneurship



Triple  
Bottom Line



Mega Regional  
Connections

**Thank you**